

# Using Along Data to Know and Support Each Student

At Along, we think of using data as a flashlight to illuminate, clarify and seek understanding. Use these 5 tips to shine a light on the insights you're gathering and support your students.



**Tip: Bring a learning mindset to looking at the data.**

## Be curious and reflective about data.



- Ask questions — of yourself and students — to understand the story.
- Surface bright spots and opportunities for growth.
- Gather insights from within Along as well as outside of the tool.
- Ask for and incorporate feedback regularly.
- Be open to making changes based on what you learn.

Remember: Sometimes students need time and opportunity to feel comfortable. Keep it low-stakes for yourself and your students. It can take time and persistence to cultivate relationships.



**Resource:** A data mindset is just as important for students as it is for educators. Consider ways to teach students how to [Share Success Stories](#) as well as [Learn From Mistakes and Failures](#).

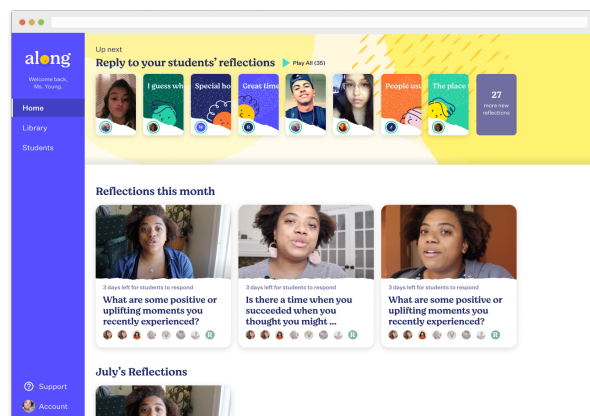


**Tip: Familiarize yourself with the key data sources in Along.**

**Visit the Along homepage to see your reflection history.**

Click on a reflection to to:

- See which students have responded and which have not.
- Review all student responses for a specific reflection question.
- View your replies to specific students for that reflection question.
- Review notes you added while watching students' reflections.



Home page

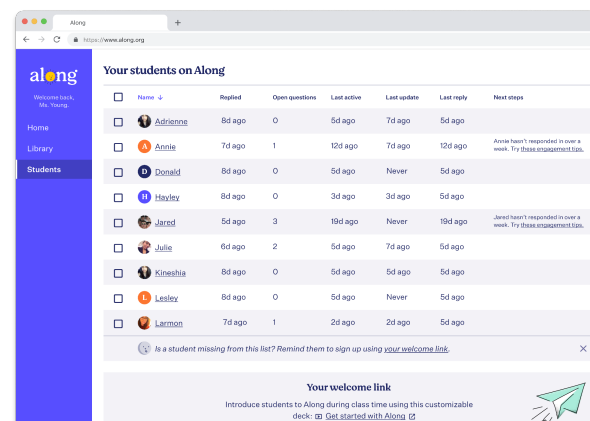
**Go to the Students page to see all your students in one place.**

Click on a column header to sort the data.

- Ask yourself: Who is responding frequently and who might need a reminder?

Click on a student name to see information for that individual.

- Ask yourself: What am I learning about this student that can inform my practice?



Students page

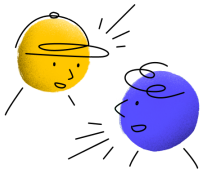


**Resources:** Want to learn more about the Students page? Check out the article [“How do I use the Student Dashboard?”](#) from the [Along Help Center](#).



## Tip: Include your students in the process.

### Communicate



Share your observations and voice questions you have with students.

- Let students know you notice when they share and when they don't—you want to hear from everyone.
- Reach out directly to students who haven't responded. Seek to understand why they are not responding. Build trust by supporting those students to feel seen and known.

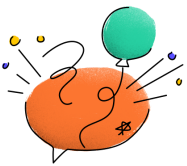
### Collaborate



Involve students in decisions to create buy-in and build trust. You might ask:

- What day of the week should I send new reflection questions?
- Why did one or more students not respond to a particular question?
- If students have suggestions for topics they'd like to reflect on next?

### Celebrate



Building relationships takes time and effort. Show students how much you enjoy getting to know them and how much you appreciate them sharing with you.



Resource: [Use this activity](#) to find ways students can be involved in classroom decisions.



**Tip: Make gathering insights a part of your Along routine.**

Incorporating data into your regular routine allows you to return to the central question of equity. It's a way to devise strategies to reach all learners, not just some.

- Dedicate time toward the process. Allot 15-20 minutes every couple of weeks.
- Use a common process to help you maximize your time.
- Keep your data in a central location, like a notebook or in a running document.
- Add a reminder to your [Along calendar](#).

#### Along Routines



Record and share a new reflection question.



Remind students to share their reflections.



Review and respond to students' reflections.



Gather insights to support students.

#### Example Routines Calendar

Monday	Tuesday	Wednesday	Thursday	Friday



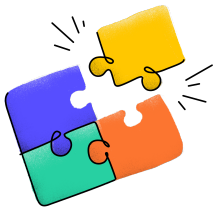
**Resource:** Protocols are great for interpreting data. [Use this 20-minute process](#) designed to support Along educators to gather insights and plan support.



**Tip: Be responsive to what you learn from the data.**

There are so many ways to be responsive using the information you gather.

You might use the data to:



- Share an exciting observation with one, some or all students.
- Help you decide which reflection question to use next.
- Check in with one or more students.
- Revisit your [Along routines](#) to make adjustments or clarify expectations.
- Surface trends to provide support to students. You could support students by:
  - Sharing an observation and asking students to help you understand the information and decide what to do next.
  - Having a class discussion about a recent event or addressing a topic brought to light in student reflections.
  - Using a Classroom Activity from the resources in Along's Library — [like this one](#) — to help students learn how to set and monitor goals.
  - Sending an additional reflection question, to provide support to a subset of students.



**Resource:** You can use this resource — [Reflect On and Promote Psychological Safety](#)—to help you create a safe space for all students to engage in the classroom.

For more educator resources like this one, visit [along.org/resources](https://along.org/resources).