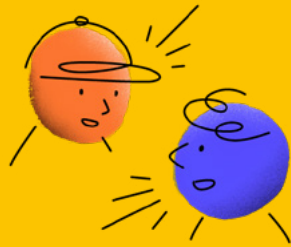


GET TO KNOW

Middle Park High School

Part of East Grand School District



Cindy Rimmer
School Leader

TYPE OF SCHOOL

Rural

LOCATION

Granby, Colorado

TOTAL STUDENTS

400 - 500 students
in grades 9-12

THE VISION

Responding to student data with an actionable solution

The students and educators at Middle Park High School in Granby, Colorado have created a community feeling that pervades its hallways and classrooms. Every week during advisory time, they are connecting with each other by discussing the answers to seemingly simple questions that dig deeper into topics that matter: belonging, motivation, wellbeing, and also, fun.

School leader Cindy Rimmer introduced Along, the free teacher-student connection builder, at the beginning of the 2023-2024 school year with the goal of providing a regular opportunity to prioritize social emotional skill building and relationship building.

“Last year, we looked at the data and a large proportion of students said they don’t feel a sense of belonging at our school,” shared Rimmer. “A lot of kids can’t identify a significant adult that they are connected to, which is a problem. But the more you get to know kids, the more you build that connection.”

THE STRATEGY

Connecting with core student group through 4 years

Teachers at Middle Park have the opportunity to connect with their group of advisory students over the course of their full high school experience, from freshman to senior year.

That’s why it made sense to **use a portion of their weekly advisory time each Wednesday to strengthen relationships by sharing an Along reflection question and having students respond back to them on the platform.**

THE IMPACT

Integrate student insights into the classroom

For Jamie Neufeld, an English teacher, using Along has opened up insights about her advisory students in a new, more in depth way. “This is about how they feel about themselves and their ability to learn,” she said. “The more that I know that, the more I am aware of what is going on in the classroom.”

Educators are choosing Along questions to use based on what may resonate most with the experiences their students are going through. And, in many cases, they are also writing their own custom questions on the platform.

Brian Seppala, a Middle Park science teacher, noted that Along could be even more valuable throughout the school if educators also used it in their academic classrooms. “The tech allows students to be anonymous to their peers, but not to their teacher,” he said. “For some of my kids, this is really their number one tool.”