



# Connections begin with a question

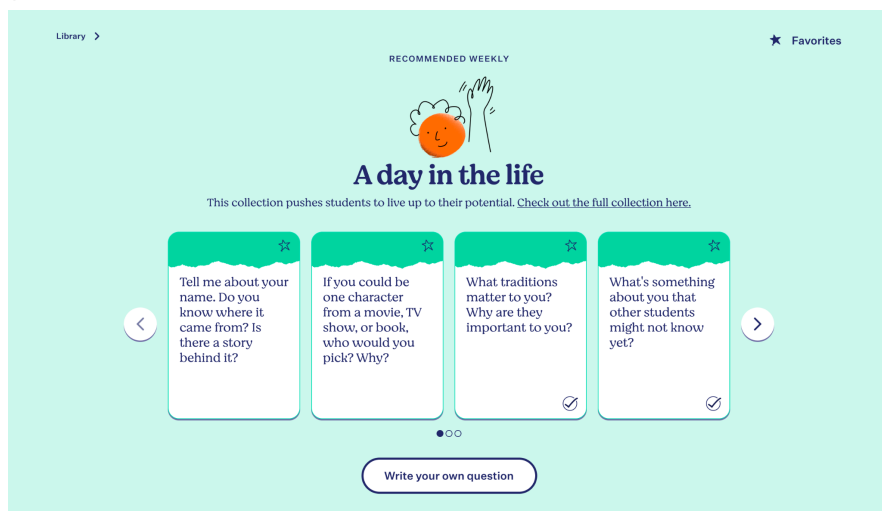
[Along's Library](#) is filled with hundreds of questions—each one designed to spark conversation and unlock connections between educators and their students.

It's easy to get started! Choose a question. Record your own reflection to share with students. Invite students to respond.

With so many approachable, research-informed questions to choose from, meaningful connections are just a few clicks away.

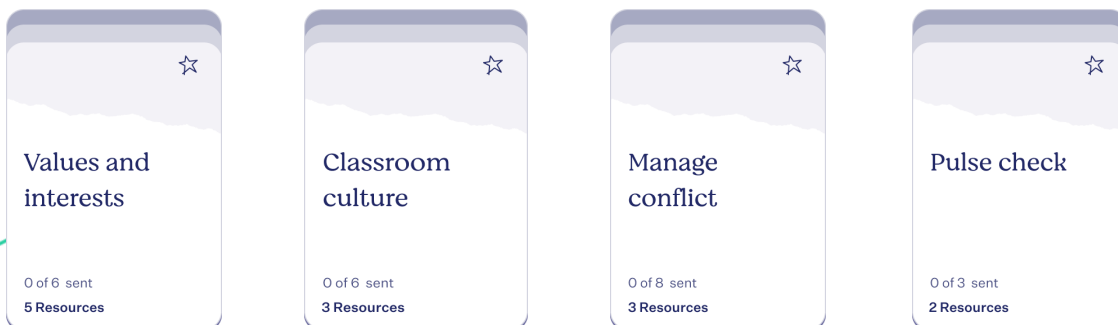
## Quickly choose a question from the recommended questions.

Count on the Along Team to highlight timely content in the Recommended Weekly section of Along's Library.



## Or, explore All Collections to discover a question that's just right.

Collections cover topics that are top-of-mind for educators and relevant for students, such as:



In each Collection, you will find topic-aligned questions like:



We've included some suggested talking points to help you decide what to share in your own reflection. Look for them to the right of the screen when you are recording.

Have ideas for questions or Collections you'd like to see in Along? Email us at [support@along.org](mailto:support@along.org).